



# LAND FOR SALE

**North Platte, Nebraska  
South Jeffers Street**

**Land For Sale  
\$940,000**

**2.69 A+-**

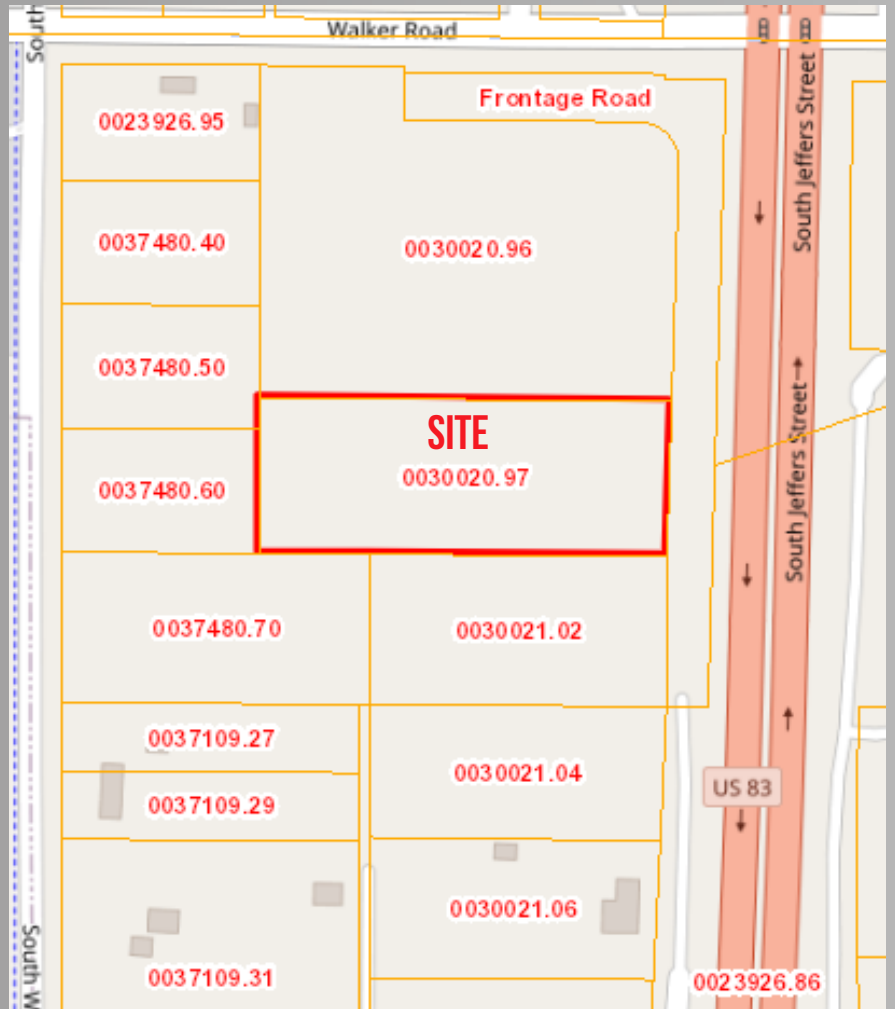
**117,111 SF**

**Zoned B-2**

**Highway Commercial**

**Northwestern Gas**

**TIF Qualified**



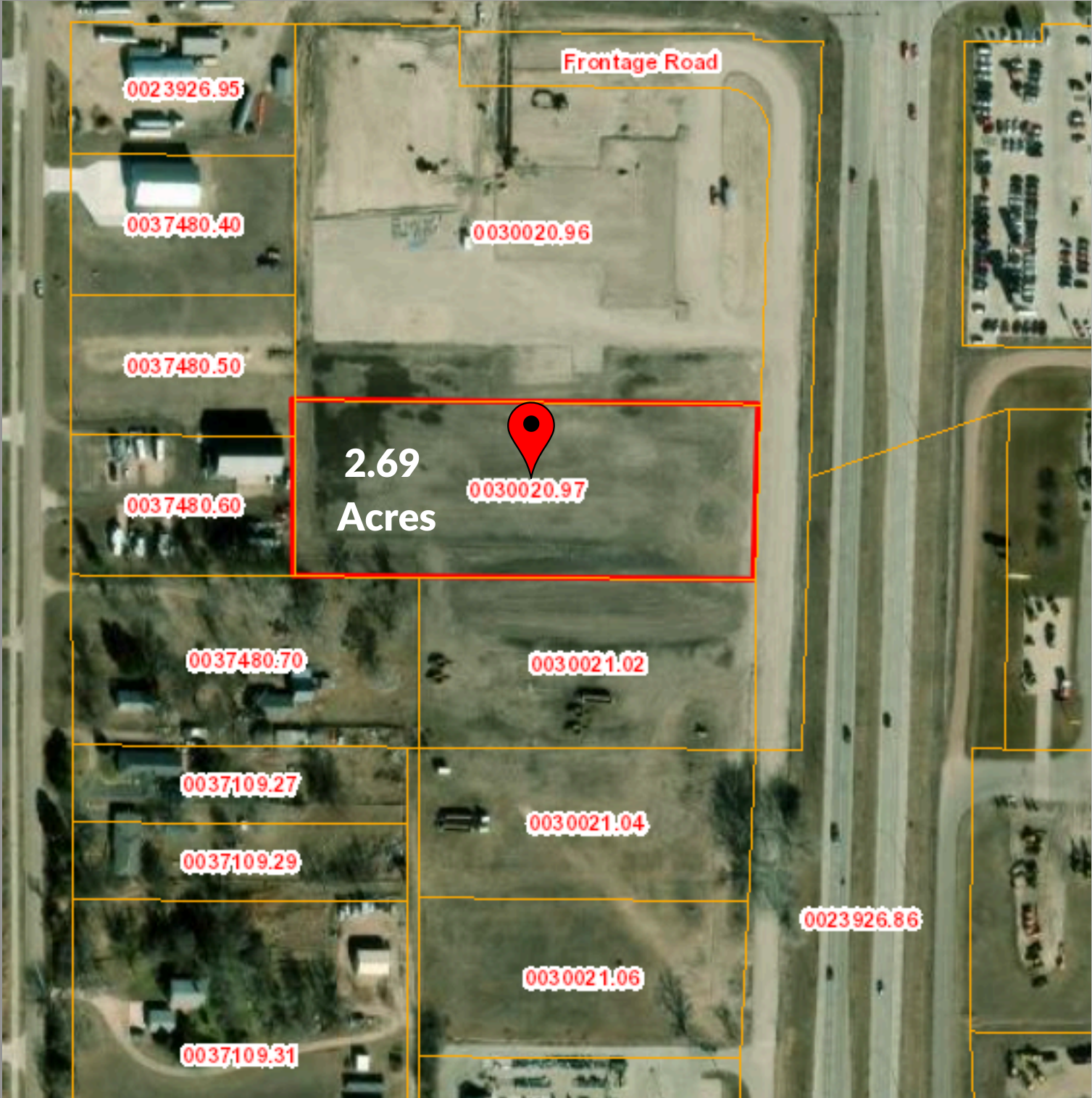
**Commercial Investment Services**

**308-532-1332  
212 N Dewey St  
cisnorthplatte.com**



**EQUAL HOUSING  
OPPORTUNITY**

# Multi-Faceted Development Site. Retail, Warehouse, Office, Industrial, Shipping and Transportation







**2.69 A**  
**117,111 SF**





**Hobby Lobby**  
Find Deals Near You

Super 8 by Wyndham  
North Platte

W Eugene Ave

Quality Inn

Kubota

Best Western Plus North  
Platte Inn & Suites

Sitting Bull Rd

Subway  
Try Tuesday's  
Meal of the Day

D & N Event Center

W Walker Rd

W Walker Rd

E Walker Rd

S Willow St

**MORPHY**  
TRACTOR & EQUIPMENT CO.



JOHN DEERE



**SITE**

NMC

CAT

Tractor Supply Co.  
Tractor Supply®  
Official Site

CrossCountry  
Freight Solutions

83

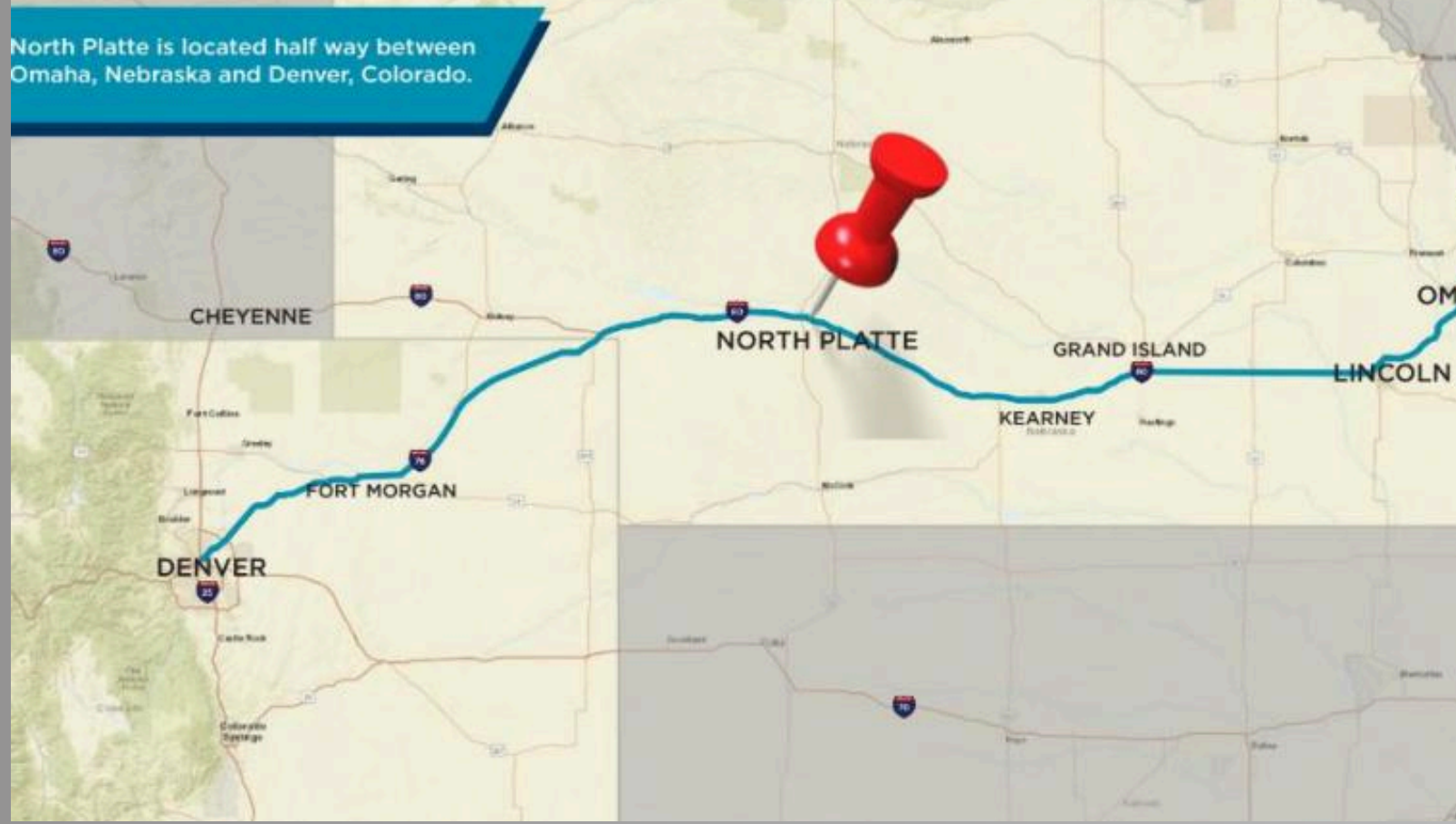
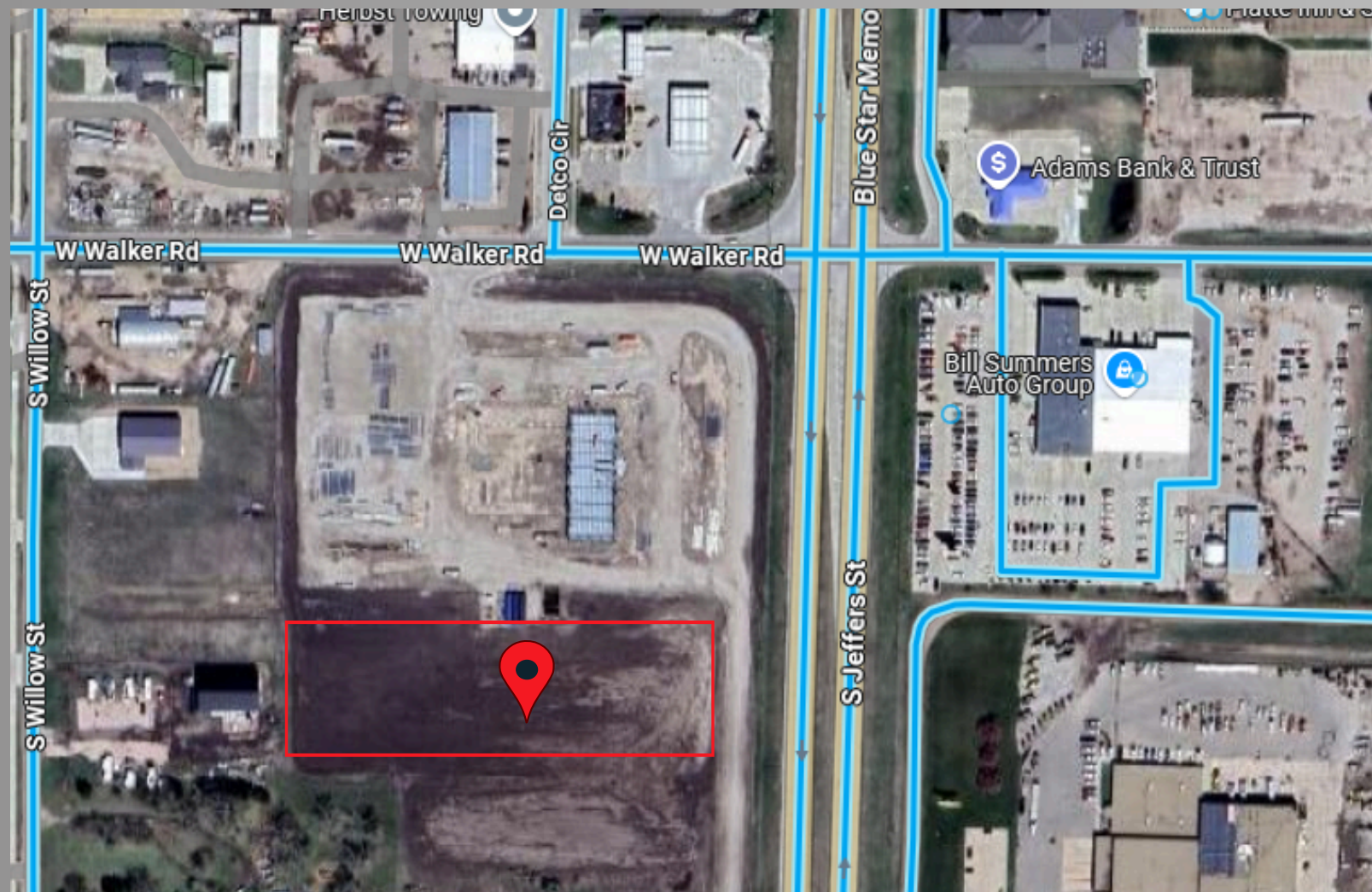
W Fremont Dr

E Fremont Dr

S Willow St



Remus Chevrolet  
and Corvette



**Robert P. M. Stefka, CCIM**  
**Broker**  
**308-532-1332 Office**  
**[rstefka@cisnorthplatte.com](mailto:rstefka@cisnorthplatte.com)**

**Robert L Stefka, CCIM**  
**Associate Broker**  
**308-532-1332 Office**  
**[rob@cisnorthplatte.com](mailto:rob@cisnorthplatte.com)**

# For More Information

## Contact Us

**212 North Dewey Street**  
**P.O. Box 1185**  
**North Platte, NE 69103**  
**Office 308-532-1332**  
**[www.cisnorthplatte.com](http://www.cisnorthplatte.com)**

**COMMERCIAL INVESTMENT SERVICES**  
**STEFKA AGENCY, INC.**

**COMMERCIAL REAL ESTATE BROKERAGE**

